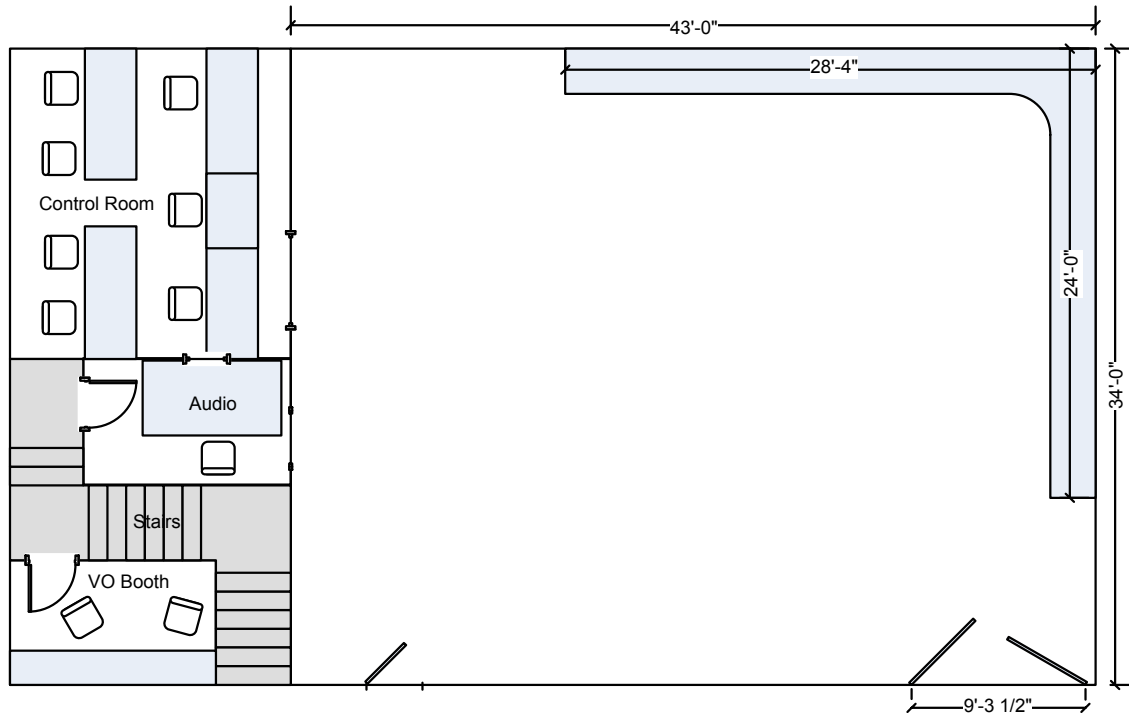


# Studio's Equipment List



Overall Studio "A" Footprint.

<b>Cameras</b> 4 Sony HDC 1400 - Matthews Pedestals - QTV Teleprompters	<b>Video Switcher</b> Sony MVS-8000 SDI/HD - 2.5 M/E - 2 Channel DME	<b>Monitor Wall</b> 8 Samsung LCD's 40" Evertz Multi-Image Processor
<b>Lenses</b> 3 Fujinon 22x HD Box Lens 1 Fujinon 22x or 4.5 wide angle Eng Lens	<b>Audio</b> Alan & Heath GL2800 Console - 24 Channel	<b>Graphics</b> Chyron LEX2 Duet SD/HD - Lyric 6.5, 5.25 & 5.24
<b>Video Tape/HDR</b> 2 Sony HDW-M2000 HD CAM 2 Sony DVE-M2000 Digital Betacam 1 Sony DVW-500 Digital Betacam 1 Sony PDW-HD1500 XD CAM 1 Sony PDW-F75 XD CAM 1 Sony PVW-2800 SP Beta 1 Omega HD Fast Forward (2 Ch)	<b>Comm/Transmission</b> RTS Digital Matrix Intercom RTS 4 Channel IFB 2 Line Telephone with Telos Vyvx Digital Fiber Line (270 Mbs) - Tandberg Encode/Decode	<b>Additional</b> 1 Avid Air Speed Server (2 Ch) 5 Avid Media Composer Suites 2 Final Cut Pro Edit Suites 1 Jib (up to 18 feet) 4 AJA Frame Syncs FS1 Studio "B" (29' x 22')

**1080i and 720p Capable. Call for Available Frame Rates. Smaller Studio also available.**



**Contact Info: Peter Costello**  
**623.328.4778**  
**602.694.1459 (Cell)**

Mailing: 2020 N. Central #400 • Phoenix, AZ 85004 • 623.328.4590 (fax)

Location: 17602 N. Black Canyon Hwy • Phoenix, AZ 85053